



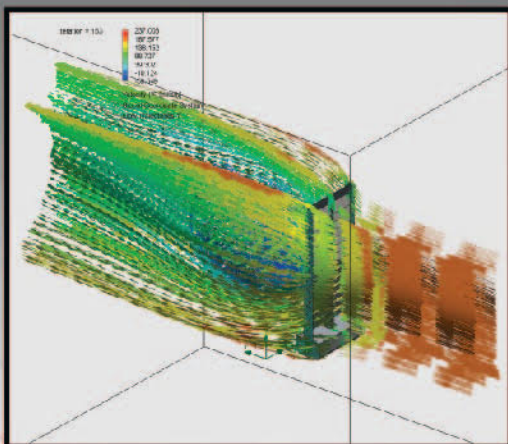
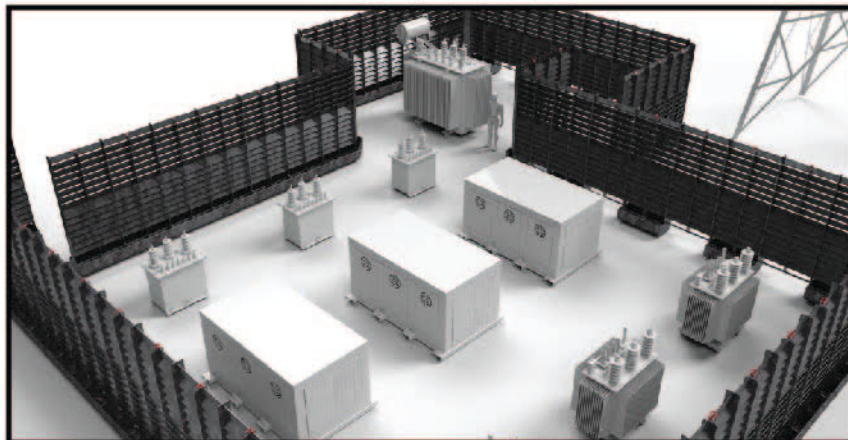
FIELD SHIELD

| ARMOR TECHNOLOGIES FOR LIFE |

The Field Shield is a maintenance free, purpose built, ventilated armor system that is intended to act as a physical ballistic barrier for critical devices within already secured sites.

All Field Shield components are engineered, constructed, and tested to the below standards.

- Threat defeat level exceeds NIJIII/CEN B6, .30/.308 7.62x51 M80 Ball/223/5.56 M193
- Armor products are built using ITAR controlled US-MIL-A-46100 steel armor
- All welding follows NAVSEA MIL-STD-278 / TARDEC TACOM D1.1 guidance
- Complete armor traceability available for longterm storage upon request
- All ballistic testing is conducted in accordance with ARL test procedures and oversight
- Wind speed certification exceeds 200mph in multi piece configurations



Live well protected.

WWW.GRIDGUARDIAN.US



Field Shield_Sentry

The Field Shield_Sentry, represents the primary component of our groundbreaking site configurable solution. Sentry is a ballasted straight wall segment that can function as a standalone solution or be built up with additional segments to form complete wall systems. Sentry is shipped empty and intended to be ballast filled with gravel or concrete, depending on specific site requirements. Additionally, like all of the Field Shield components, various ground tether mounting locations are able to accept a multitude of anchor positions.

Physical Dimensions - 48"(1219mm) wide x 120"(3048mm) tall
Ship Weight - 790/lbs
Test Weight - *1790/lbs *ballast filled with concrete



Field Shield_Pivot

The Field Shield_Pivot manages all corner interfaces and support legs. Standard mounting conditions and hardware are used for assembly. The Pivot90 is a 90 degree corner segment only.



Physical Dimensions - 31"(788mm) wide x 120"(3048mm) tall
Ship Weight - 350/lbs
Test Weight - 350/lbs

Field Shield_Flex

The Field Shield_Flex was designed as an optional, lower cost straight wall segment and is intended to be flanked by _Sentry units.



Physical Dimensions - 48"(1219mm) wide x 107"(2718mm) tall
Ship Weight - 650/lbs
Test Weight - 650/lbs